

State of Wyoming Corner Record

(In compliance with the *CORNER PERPETUATION AND FILING ACT*, Wyoming Statutes, 1997, Section 33-29-140, et. seq., and the Rules and Regulations of the Board of Registration for Professional Engineers and Professional Land Surveyors)

Reverse side of this form may be used if more space is needed.

Record of original survey and citation of source of historical information (if corner is lost or obliterated). Description of corner monumentation evidence found and/or monument and accessories established to perpetuate the location of this corner. Sketch of relative location of monument, accessories, and reference points with course and distance to adjacent corner(s) (if determined in this survey). Method and rationale for reestablishment of lost or obliterated corner.

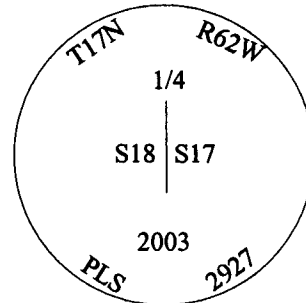
G.L.O. Record: Charles A. Canton, U.S. Deputy Surveyor, July 22, 1873.
40.00 Chains Limestone 20 x 15 x 3 set 10 in deep marked 1/4 on W. side for 1/4 sec. cor.

Found: Found 2 County Road Stones buried approximately 3" below ground level, marked "WCCR", 80.00 feet apart and along the old right of way fences of Laramie County Road No. 149. I could find no record indicating the establishment of these monuments.

Set: Accepted as the best available evidence of the original corner position and found to be harmoniously related to found and accepted corners north and south, and after a diligent search for the original corner monument, I set at midpoint, between the found County Road Stones, a 2 1/2" diameter x 30" galvanized iron pipe with a 3 1/4" diameter brass cap, marked as noted below, 24" in the ground. Set a carsonite witness post approx. 1' north.

See back of this sheet for measurements to other found and or set and accepted corners in the area.

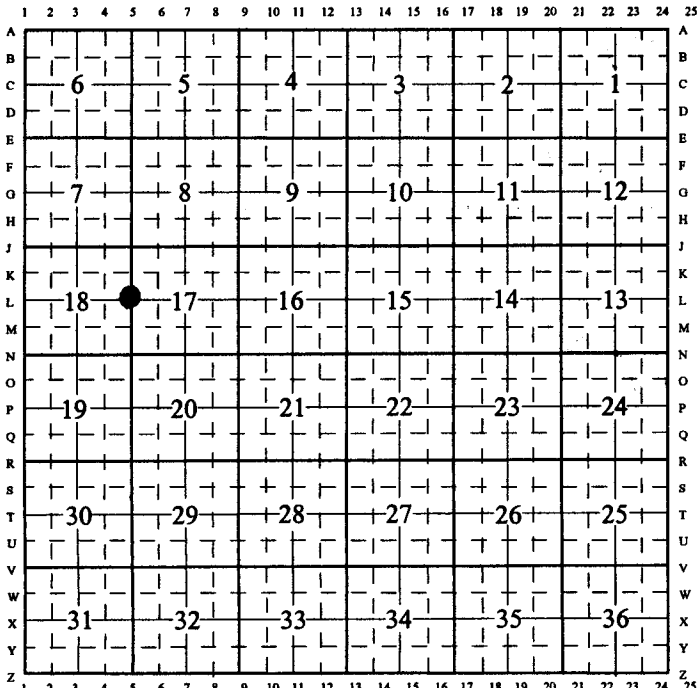
Aluminum Cap Markings



Date of Field Work: May 23, 2003

Office Reference: Burns North 26109

CROSS INDEX DIAGRAM



Firm/Agency, Address

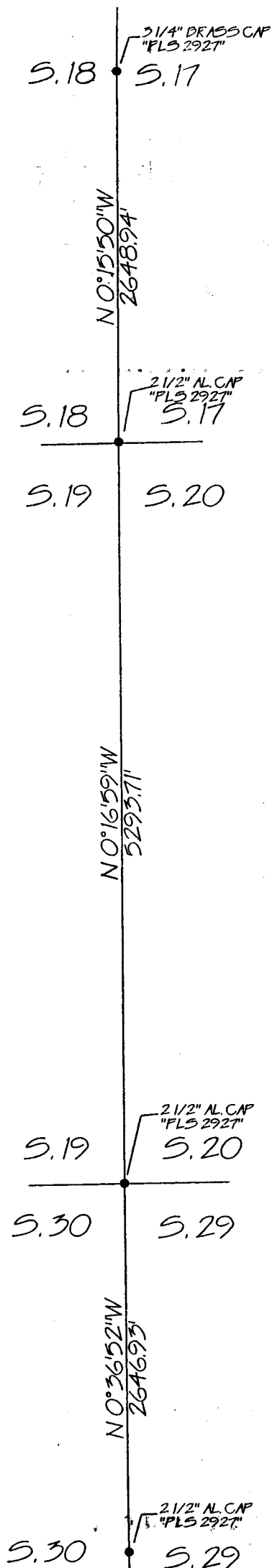
Paul A. Reid, PLS
1533 Pinion Drive
Cheyenne WY
Phone (307) 637-3400

This corner record was prepared by me or under my direction and supervision.

SEAL & SIGNATURE



Corner Name: West 1/4 Corner Section: 17 T.17 N., R. 62 W., 6th P.M., Cross-Index No.: L-5
SBRPEPLS/PLSW: MARCH 1994/97



Bearings are grid and based upon the Wyoming East Zone NAD 83. Geodetic bearings can be derived by applying $-0^{\circ} 52' 21''$ to the bearing.